



Company : Santos

Well : Henry 2DW1 ST1

Interval : 802.00 - 2050.00 meters

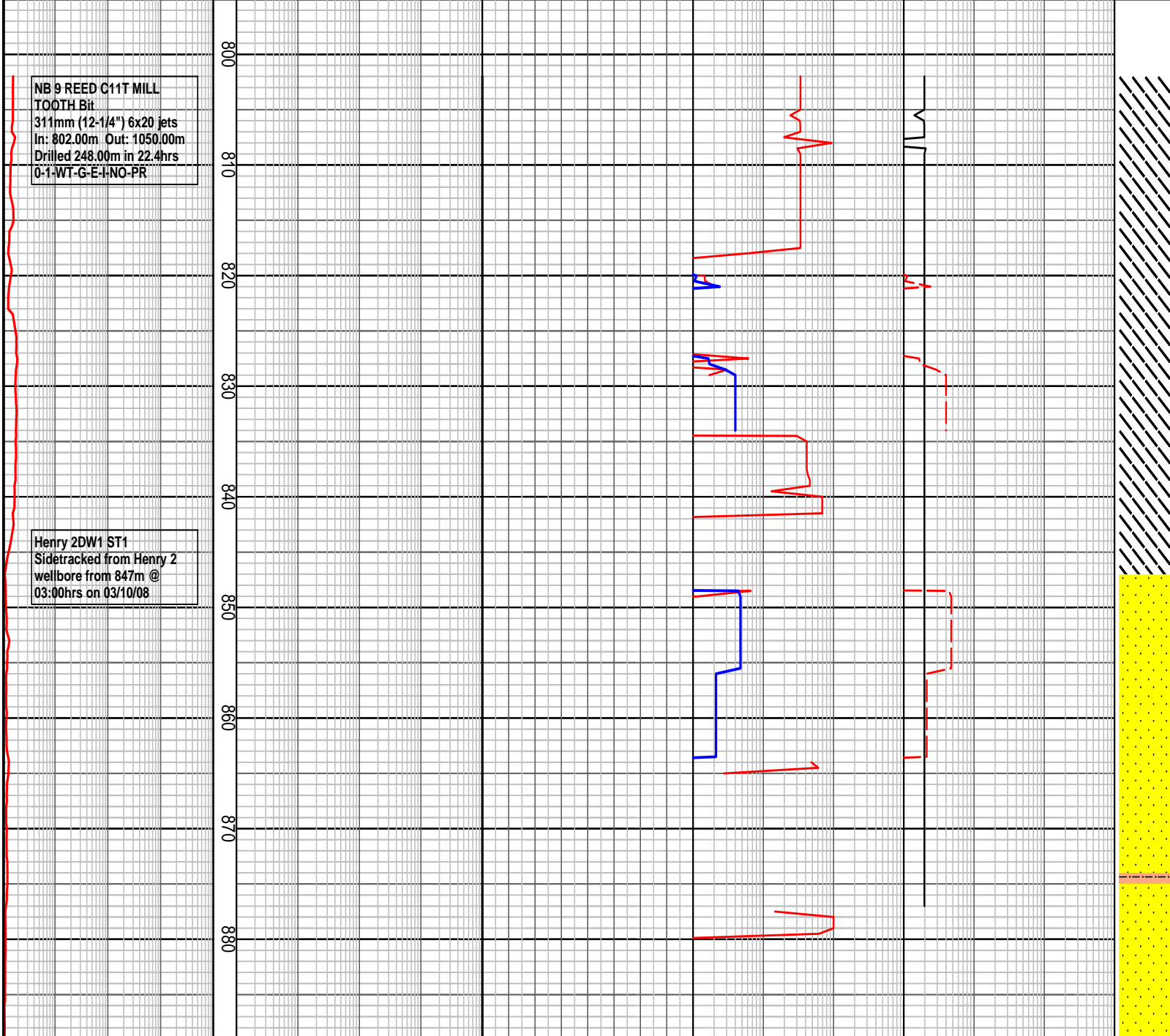
Created : 08/Oct/2008 3:48:22 AM

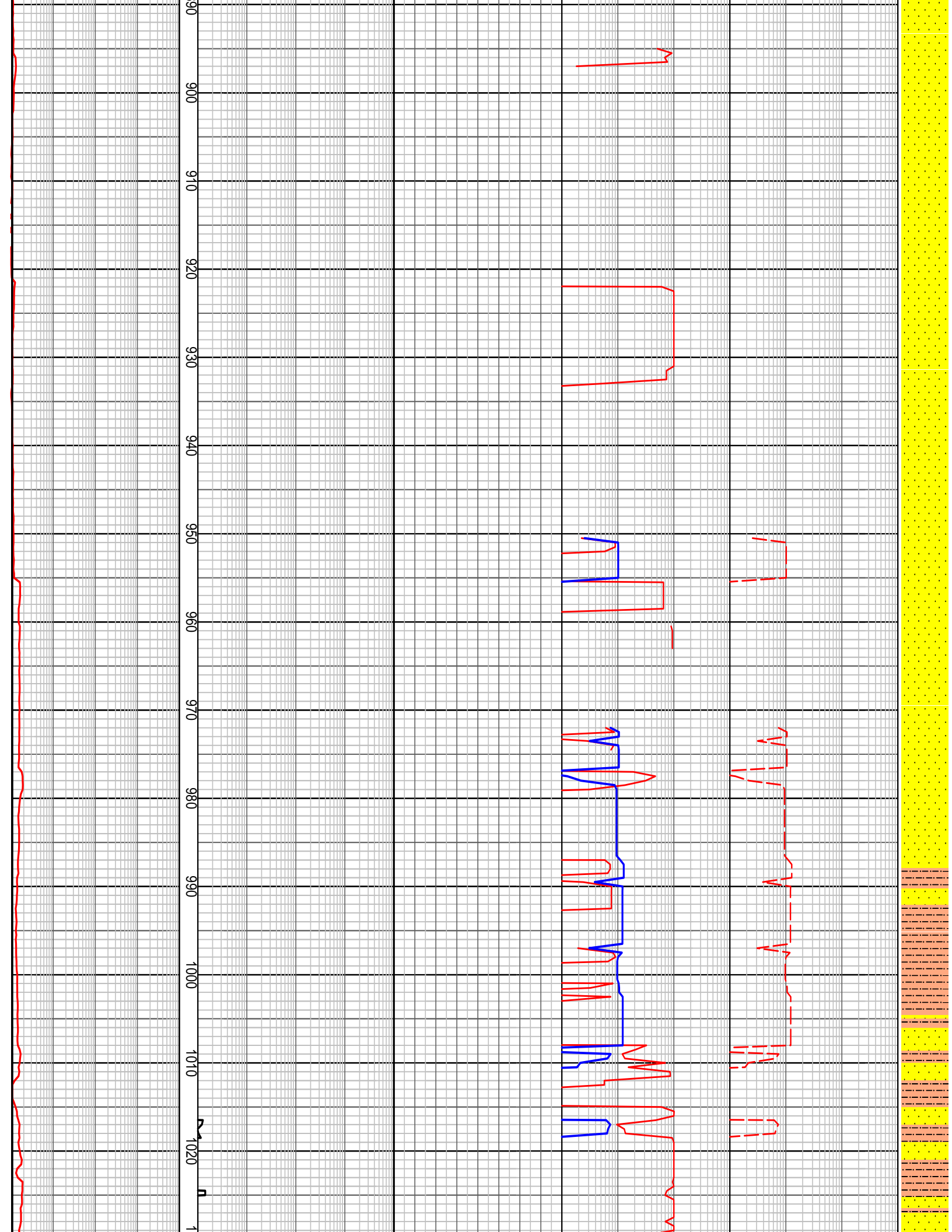


INTEQ

HENRY 2DW1 ST1 GAS RATIO PLOT

TOTAL GAS DITCH GAS	MD meters :500	CHROMATOGRAPH ANALYSIS Methane	OCQ				RATIOS			C1/(C2+C3+C4)		
			OCQ Backup				GWR			C1/C2		
1 10 100 1000 unit		Ethane	5 6 7 8	10 100 1000			C1/C3					
		Propane		100 1000			C1/C4					
		iso-Butane	1 2 3 4	10 100 1000			C1/C5					
		iso-Pentane					10 100 1000					
		n-Butane										
	10	n-Pentane	100000									
		ppm										





NB 10 REED RSX616M-A16
PDC Bit
311mm (12-1/4") 3x15 3x16
jets
In: 1050.00m Out: 2050.00m
Drilled 1000.00m in 45.1hrs

1030
1040
1050
1060
1070
1080
1090
1100
1110
1120
1130
1140
1150
1160
1

